



# S

# I

# M

# S<sup>®</sup>

(SCHOLARS INTEGRAL MATHS & SCIENCE OLYMPIADS)



## BIGGEST NATIONAL LEVEL OLYMPIADS (STAGE - II) : 2025-26

MAX. MARKS : 90

SISO QUESTION PAPER

TIME: 60 MIN.

NAME OF THE STUDENT : .....

HALL TICKET NUMBER : .....

NAME OF THE SCHOOL : .....

### INSTRUCTIONS TO THE STUDENTS :

- ☞ Write your Hall ticket number immediately after receiving the question paper booklet.
- ☞ Darken the answers only on the OMR Sheet.
- ☞ Read the instructions given on the OMR sheet and follow them accordingly.
- ☞ Don't write any thing on the question paper booklet.
- ☞ To do rough work, use only the white paper provided in the examination hall.
- ☞ **No negative marks.**
- ☞ This question paper booklet consists of 30 questions.
- ☞ **PHYSICS (Q.No-1 to 10) :**  
First 7 questions (1 to 7) are single correct answer type.  
Each question carries THREE marks.  
Next 3 questions (8 to 10) are one or more than one correct answer type. Each question carries THREE marks.
- ☞ **CHEMISTRY (Q.No-11 to 20) :**  
First 7 questions (11 to 17) are single correct answer type.  
Each question carries THREE marks.  
Next 3 questions (18 to 20) are one or more than one correct answer type. Each question carries THREE marks.
- ☞ **BIOLOGY (Q.No-21 to 30) :**  
All questions (21 to 30) are single correct answer type.  
Each question carries THREE marks.
- ☞ Students are not allowed to use any Mathematical and Physical tables (OR) any other electronic devices.
- ☞ After completion of the examination hand over the OMR answer sheet to the invigilator without fail. You can retain the question paper with you.
- ☞ Students should not leave the examination hall before the last bell rings.
- ☞ To know your results log in to our website [www.simsolympiads.com](http://www.simsolympiads.com).
- ☞ Stage-I branch result copy will be sent to the school mail id. Please contact your principal to know your result.

**Single Correct Answer Type :**

7 × 3 = 21

1. A tester is used by the electrician to determine.

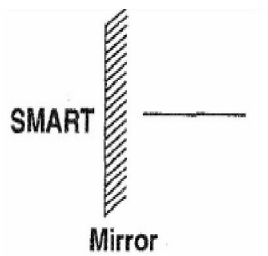
- 1) The presence of electric current
- 2) The temperature
- 3) The amount of electric current
- 4) The rate of flow of electric current

2. A torch is shone onto an object P as shown in the diagram. A dark shadow is formed on the screen. The object P is not likely to be made of \_\_\_\_\_.



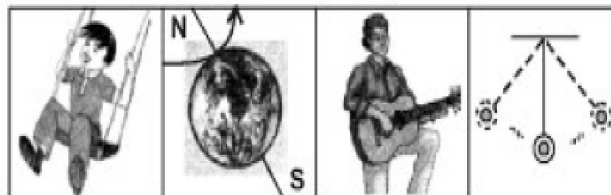
- 1) Wood
- 2) Steel
- 3) Glass
- 4) Cardboard

3. The mirror Image of 'SMART' will be



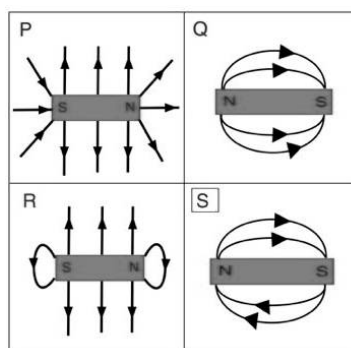
- 1) TЯAMƧ
- 2) TAMƧЯ
- 3) SMART
- 4) SMRAT

4. What is common in the motions exhibited in the figures?



- 1) All motions are periodic
- 2) All motions are oscillatory
- 3) All motions are rotational
- 4) All motions are uniform

5. Which of the following diagrams showing the magnetic field lines around a bar magnet is correct ?

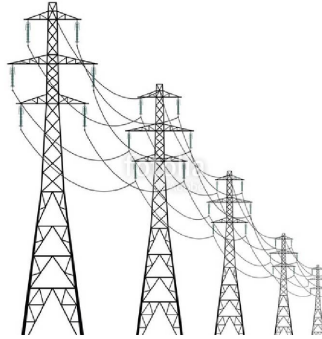


- 1) Diagram S
- 2) Diagram R
- 3) Diagram Q
- 4) Diagram P

6. Which of the following is used to measure the length of a curved surface ?

- 1) Only a graph paper
- 2) Only a metre scale
- 3) Only a thread
- 4) Both the metre scale and the thread

7. Most of the electricity wires near highways do not have a plastic covering like the wires used at home. Yet, there is no loss of energy. Why ?



- 1) Electricity flows very fast near highways
- 2) Air is a bad conductor of electricity
- 3) Air is a good conductor of electricity
- 4) Electricity flows very slow near high ways

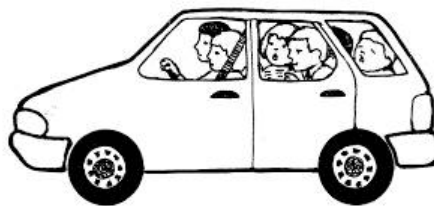
**Multi Correct Answer Type :**

**3 × 3 = 9M**

8. A girl uses a worn out ruler to measure the length of a table in her room. She placed the ruler such that the mark 3.0 cm coincides with one end and the other end coincides with the mark 33.5 cm. The length of the table is \_\_\_\_\_.

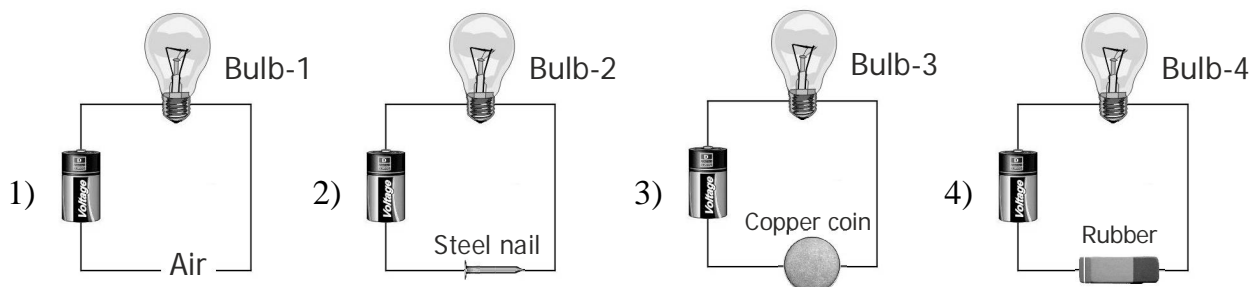
- 1) 33.5 cm
- 2) 305 mm
- 3) 335 mm
- 4) 30.5 cm

9. Select the CORRECT statement(s) from the following.



- 1) Speed of car is not uniform due to traffic
- 2) Speed of car on road is always uniform
- 3) Speed is a scalar quantity
- 4) Speed of a moving body never be zero

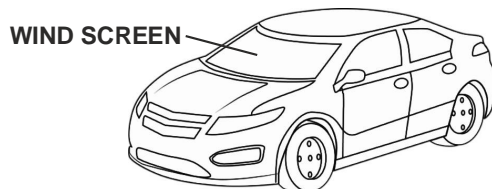
10. The following diagrams shows a flashlight battery and a bulb connected by wires to various substances. Which of the bulbs will light?



**Single Correct Answer Type :**

**7 × 3 = 21M**

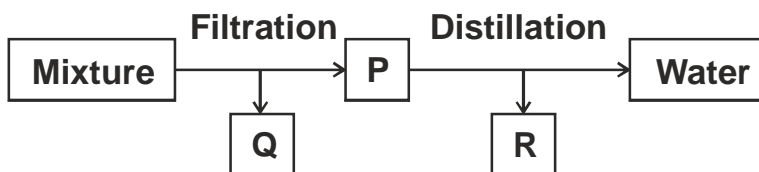
11. A car manufacturer has to decide on the best material to make the windscreen of a car. Some information on the four available materials is shown in the table below. Which material is most suitable for making the windscreen?



Materials	Properties
P	Soft, waterproof and transparent
Q	Hard, waterproof and transparent
R	Soft, able to float on water and long-lasting
S	Hard, able to float on water and long-lasting

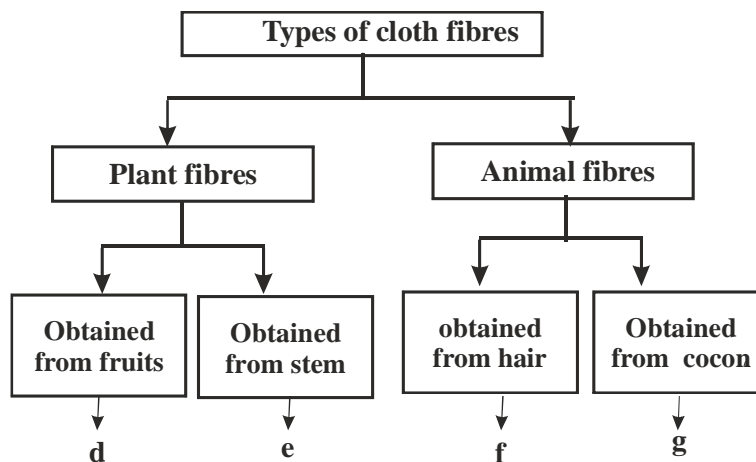
- 1) P                                      2) Q                                      3) R                                      4) S

12. The following flow chart which gives the techniques a student adopted to separate the constituents of a mixture. What could substance 'R' be?



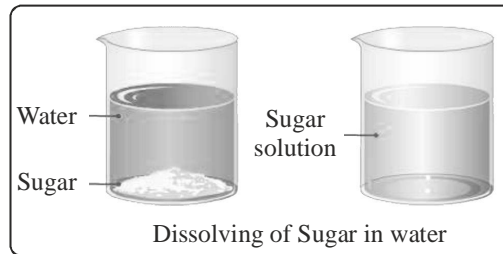
- 1) Sugar                                      2) Chalk powder                                      3) Glass                                      4) Oxygen

13. Study the given classification chart. What would be at d, e, f and g ?



- 1) d - Jute, e - Cotton, f - Wool, g - Silk                                      2) d - Cotton, e - Jute, f - Wool, g - Silk  
 3) d - Cotton, e - Jute, f - Silk , g - Wool                                      4) d - Wool, e - Silk , f - Cotton, g - Jute

14. Hemanth took 200 ml of water in a beaker and dissolved two tea spoonsful of sugar in it. When he checked the volume of water, the volume remained same at 200 ml. Can you tell the reason?



- 1) Sugar actually not dissolved in the water
  - 2) Sugar evaporated
  - 3) Sugar has zero volume
  - 4) Sugar occupied the empty space in between the molecules of water
15. Choose the correct sequence for preparing clothes among the following.
- 1) Yarn → Fibre → Fabric → Cloth
  - 2) Fibre → Yarn → Fabric → Cloth
  - 3) Fabric → Fibre → Yarn → Cloth
  - 4) Cloth → Fabric → Fibre → Yarn
16. The diagram shows the apparatus for separating soil and water. What are the labelled parts?



- 1) A = Stirrer, B = Filtrate, C = Funnel
  - 2) A = Funnel, B = Stirrer, C = Filtrate
  - 3) A = Filtrate, B = Stirrer, C = Funnel
  - 4) A = Stirrer, B = Funnel, C = Filtrate
17. While making chapati, Radhika observed the following changes, which among the following is a reversible change?
- 1) Changing of flour into dough
  - 2) Rolling of chapati
  - 3) Baking of chapati
  - 4) Eating a chapati

---

**Multi Correct Answer Type :**

**3 × 3 = 9M**

18. Which of the following statements are correct?

- 1) Chalk powder and chalk can be separated by filtration
- 2) Common salt is used in making food items
- 3) Sand and sugar are lighter components
- 4) Iodine and sand can be separated by sublimation

19. Identify the correct statements from the following

- 1) Cooking of food is irreversible change      2) Hammering of iron is irreversible change  
3) Boiling of an egg is reversible change      4) Melting of ice is reversible change

20. Which of the following are examples of liquid -liquid mixtures ?

- 1) Sugar solution      2) Alcohol in water  
3) Muddy water      4) Liquid ammonia

Single Correct Answer Type :

10 × 3 = 30M

21. Which of the following statements about the food we eat is / are TRUE?

- (i) Digestion ends in the small intestine.  
(ii) Our teeth in the mouth can help to speed up the process of digestion.  
(iii) All the food that enters the small intestine will be absorbed by our body.  
(iv) Digestive juices are added to the food in the mouth, Oesophagus and small intestine.

- 1) (iv) only      2) (iii) only      3) (i) & (ii)      4) (iii) & (iv)

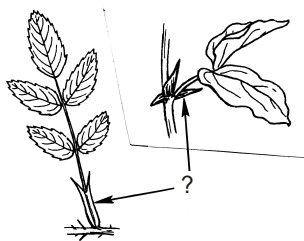
22. Two different animals have the following characteristics :

They are aquatic animals : They give birth to their young ones and suckle them.  
They have blow holes and breathe through lungs.

The animals are likely to be

- 1) A turtle and a frog      2) A sword fish and a shark  
3) A turtle and a penguin      4) A dolphin and a whale

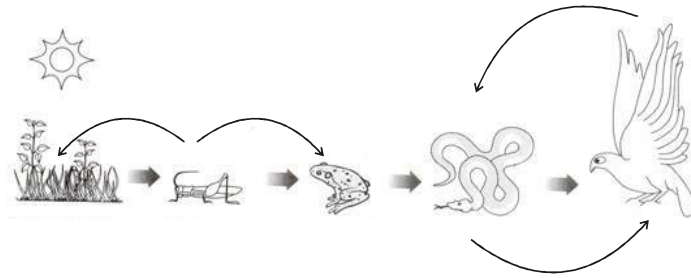
23. A small leaf like appendage to a leaf, typically borne in pairs at the base of the leaf stalk is ?



The '?' mark in the above figure represents.

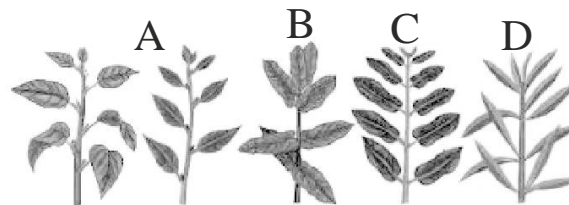
- 1) Petiole      2) Stipule      3) Bract      4) Peduncle

24. A food chain shows a sequence of organisms in a region through which energy from producers get transferred. In context to the above statement, what is wrongly depicted in the following chain?



- 1) Snake eating frog
- 2) Frog eating grasshoper
- 3) Grasshopper eating plants
- 4) Snake eating eagle

25. Phyllotaxy is the arrangement of leaves on the stem. Identify the four types of phyllotaxy shown in the figures ‘A’, ‘B’, ‘C’ and ‘D’.



- 1) Alternate, Opposite, Spiral and Whorled
- 2) Opposite, Whorled, Alternate and Spiral
- 3) Alternate, Spiral, Opposite and Whorled
- 4) Whorled, Alternate, Opposite and Spiral

26. Study an interrupted food chain given below carefully “A → B → C → D”

Which of the following statements is definitely TRUE?

- 1) A is a food producer
- 2) B is a herbivore
- 3) C is a carnivore
- 4) D is a an omnivore

27. Match the following List’s and Select the correct option.

List - I

- a) Tomatoes
- b) Pea nuts
- c) Onions
- d) Sweet potatoes

List - II

- p) Carotenoid antioxidants
- q) Antioxidant
- r) Lower your risk of cancer
- s) Beneficial protein
- t) Rich in fats

- 1) a - r, b - s, c - q, d - p
- 2) a - t, b - s, c - r, d - p
- 3) a - r, b - t, c - q, d - q
- 4) a - r, b - s, c - t, d - p

28. Plants growing in Xerophytic conditions have

- i) Extensively developed shoot system.      ii) Extensively developed root system.  
iii) Small and thick stems.                      iv) Large flowers and Extensive air spaces.

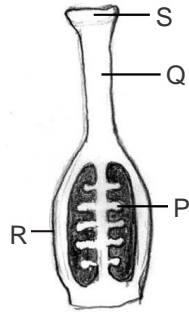
1) (i) and (iv) only      2) (ii) and (iii) only      3) (iii) and (iv) only      4) (i), (ii) and (iii)

29. The place where freshwater mixes with salt water and where you will find mangroves, salt marshes, and mud flats is called.

- 1) Mouth of Sea      2) Estuary                      3) Salt lake                      4) Land scapes

30. Which part in the labelled figure becomes Fruit after fertilization ?

- 1) P  
2) Q  
3) R  
4) S



❖❖❖ ALL THE BEST ❖❖❖