



SIMS[®]

(SCHOLARS INTEGRAL MATHS & SCIENCE OLYMPIADS-HYD)

GRADE
IX

BIGGEST STATE LEVEL OLYMPIAD : 2025-26

SISO QUESTION PAPER : STAGE - I

MAX. MARKS : 90 TIME: 60 MIN.

NAME OF THE STUDENT :
HALL TICKET NUMBER :
NAME OF THE SCHOOL :

INSTRUCTIONS TO THE STUDENTS :

- ☞ Write your Hall ticket number immediately after receiving the question paper booklet.
- ☞ Darken the answers only on the OMR Sheet.
- ☞ Read the instructions given on the OMR sheet and follow them accordingly.
- ☞ Don't write any thing on the question paper booklet.
- ☞ To do rough work, use only the white paper provided in the examination hall.
- ☞ **No negative marks.**
- ☞ This question paper booklet consists of 30 questions.
- ☞ **PHYSICS (Q.No-1 to 10) :**
 - First 7 questions (1 to 7) are single correct answer type.
 - Each question carries THREE marks.
 - Next 3 questions (8 to 10) are one or more than one correct answer type. Each question carries THREE marks.
- ☞ **CHEMISTRY (Q.No-11 to 20) :**
 - First 7 questions (11 to 17) are single correct answer type.
 - Each question carries THREE marks.
 - Next 3 questions (18 to 20) are one or more than one correct answer type. Each question carries THREE marks.

☞ **BIOLOGY (Q.No-21 to 30) :**

All questions (21 to 30) are single correct answer type.

Each question carries THREE marks.

- ☞ Students are not allowed to use any Mathematical and Physical tables (OR) any other electronic devices.
- ☞ After completion of the examination hand over the OMR answer sheet to the invigilator without fail. You can retain the question paper with you.
- ☞ Students should not leave the examination hall before the last bell rings.
- ☞ To know your results log in to our website www.simsolympiads.com.
- ☞ Stage-I branch result copy will be sent to the school mail id. Please contact your principal to know your result.

Single Correct Answer Type : **$7 \times 3 = 21M$**

1. **A person riding a bicycle at constant velocity throws a ball vertically up into air. The ball falls**



- 1) Outside the bicycle 2) Infront of the cycle
 3) Behind the cycle
 4) Exactly in the hand which threw it up
2. **Coolie A takes 1 min to raise a box of mass m through a height of 2.0 m. Another coolie B takes 30 s for the same job. Which one has greater power?**
- 1) Coolie A 2) Coolie B
 3) Both have the same power 4) Can't say

3. A boy caught a ball of mass 200g moving with a speed of 30 ms^{-1} . If the catching process to be completed in 0.1 s, the force of impact exerted by the ball on the hands of the boy is



- 1) 60 N 2) 40 N 3) 30 N 4) 20 N
4. A person is standing in an elevator. The situation in which he finds his weight less than actual, is when ?



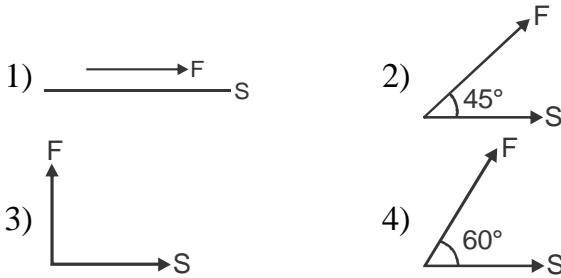
- 1) The elevator moves upward with constant acceleration
 2) The elevator moves downward with constant acceleration
 3) The elevator moves upward with uniform velocity
 4) The elevator moves downward with uniform velocity
5. A particle starts sliding down a frictionless inclined plane. If s_n is the distance travelled by it from time $t = n - 1$ sec to $t = n$ sec, the ratio s_n / s_{n+1} is

- 1) $\frac{2n-1}{2n+1}$ 2) $\frac{2n+1}{2n}$ 3) $\frac{2n}{2n+1}$ 4) $\frac{2n+1}{2n-1}$

6. When a wet towel is jerked sharply the droplets of water come out. It is because

- 1) On jerking loose water is pulled by the earth's gravity
- 2) of the inertia of motion of water
- 3) of the inertia of rest of water
- 4) of the inertia of direction of water

7. In which of the following cases is work done maximum



Multi Correct Answer Type :

$3 \times 3 = 9M$

8. The kinetic energy of a freely falling body

- 1) is directly proportional to height of its fall
- 2) is inversely proportional to height of its fall
- 3) is directly proportional to square of time of its fall
- 4) is inversely proportional to square of time of its fall

9. Which of the following statements are false?

- 1) Newton's second law of motion gives the measurement of force
- 2) According to Newton's II law of motion, force is directly proportional to the rate of change of momentum
- 3) Newton's second law of motion gives the definition of force
- 4) According to Newton's II law of motion, force is inversely proportional to the rate of change of momentum

10. Which of the following are matched with correct response.

- 1) Graph showing uniform velocity - Straight line parallel to x-axis
- 2) Graph showing uniformly accelerated velocity - Straight line sloping downwards
- 3) Graph showing uniformly retarded motion - Curved line
- 4) Graph showing non-uniform motion - Straight line sloping upwards

Single Correct Answer Type : _____

$7 \times 3 = 21M$

11. Match the following with correct response.

Column - I

Column - II

- | | |
|-------------------|--|
| P) Fusion | A) Change of liquid state into gaseous state |
| Q) Vaporization | B) Change of liquid state into solid state |
| R) Condensation | C) Change of vapour state into liquid state |
| S) Solidification | D) Change of solid state into liquid state |

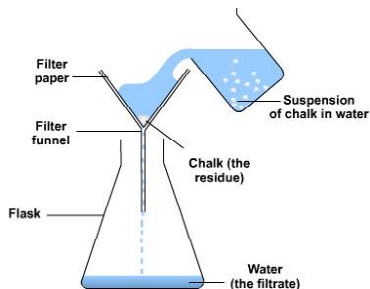
1) P-C, Q-B, R-D, S-A 2) P -D, Q -A, R -C, S -B

3) P -B, Q -D, R -A, S -C 4) P -A, Q -C, R -B, S -D

12. Arrange the following substances in increasing order of attraction between the particles: water, sugar, oxygen.

- | | |
|---------------------------|---------------------------|
| 1) Water < sugar < oxygen | 2) Oxygen < water < sugar |
| 3) Sugar < water < oxygen | 4) Sugar < oxygen < water |

13. A mixture of chalk powder and water can be separated using the technique of filtration because



- 1) Chalk powder remains suspended in water
 - 2) They form a miscible solution
 - 3) The mixture can easily pass through filter paper
 - 4) Water acts as a good solvent
14. Neha bought a chips packet. She absorbed that, the packet is fully filled with a gas along with lays. Can you guess what gas might be that?

- 1) Oxygen
- 2) Nitrogen
- 3) Water vapour
- 4) Chlorine



15. The molecular formula of P_2O_5 means that .

- 1) A molecule contains 5 atoms of P and 2 atoms O
- 2) The ratio of the mass of P to the O in the molecule is 2:5
- 3) The molecule name is phosphorus trioxide
- 4) A molecule contains 2 atoms of P and 5 atoms O

1) 14 g of CO

2) 4 g of He

3) 28 g of N₂4) 71 g of Cl₂

20. Various kinds of mixtures and their separation techniques are listed. Which of the following is/are correctly matched?

(a) Saline water

: Distillation

(b) Iron and sulphur

: Dissolution in CS₂

(c) Sand and wax

: Gravity method

(d) Salt and Iodine

: Sublimation

1) a

2) b

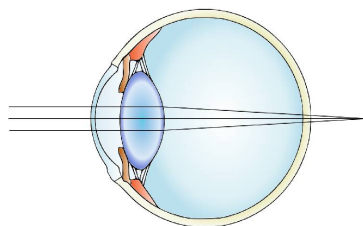
3) c

4) d

Single Correct Answer Type : ___

10 × 3 = 30M

21. Observe the figure given below.



What type of defect of the eye is shown in the given figure?

1) Myopia

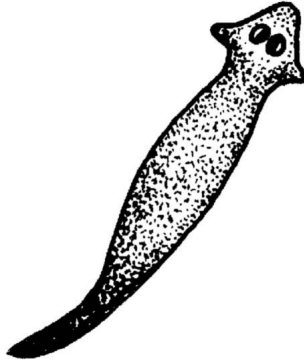
2) Hypermetropia

3) Astigmatism

4) Cataract

22. Which of the following elements is accumulated in sea weeds ?

- 2) Statement B is correct, A is wrong.
 - 3) Both the statements A and B are correct.
 - 4) Both the statements A and B are wrong.
25. **'Planaria' belongs to a group of animals which are best described as**



- 1) Aquatic, sessile, not issue with skeleton of spicules.
 - 2) Cells organised into tissues and with diploblastic body wall.
 - 3) Free living or parasitic, acoelomate, triploblastic with flame cells.
 - 4) Bilateral symmetrical, unsegmented and triploblastic with pseudocoelom.
26. **Various life forms appeared on earth at certain time periods in the history of several million years. Arrange the following in the order of their appearance on earth (starting with earliest).**
- i) **Cells without nucleus**
 - ii) **First vascular plants**
 - iii) **Undifferentiated plant body - Thallus**

iv) Plant with taproot system

- 1) (i) → (iii) → (iv) → (ii) 2) (ii) → (iii) → (i) → (iv)
 3) (i) → (ii) → (iv) → (iii) 4) (i) → (iii) → (ii) → (iv)

27. Match the following with correct response.

- | | |
|----------------------------|-------------------------------------|
| i) Plasmolysis | p) Movement of solvent |
| ii) Osmosis | q) Solute movement |
| iii) Diffusion | r) Remove of salt from water |
| iv) Reverse osmosis | s) Protoplast shrinkage |

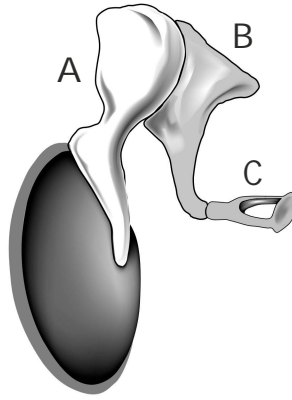
- 1) (i)-r, (ii)-p, (iii)-s, (iv)-q
 2) (i)-p, (ii)-s, (iii)-q, (iv)-r
 3) (i)-s, (ii)-p, (iii)-q, (iv)-r
 4) (i)-s, (ii)-q, (iii)-p, (iv)-r

28. Find out CORRECT statement :

- i) Collenchymatous tissues are irregularly thickened at corners.**
- ii) Apical & intercalary meristems are permanent tissues.**
- iii) Meristematic tissues, in its early stage, lack vacuoles.**
- iv) Parenchymatous tissues have intercellular spaces.**
- 1) (i), (ii), (iii) & (iv)

- 2) (ii) & (iii)
- 3) (ii) only
- 4) (i), (iii) & (iv)

29. Identify the ear ossicle “A” in the diagram given below :



Ear ossicle

- | | |
|-----------|------------|
| 1) Incus | 2) Malleus |
| 3) Stapes | 4) Pubis |

30. Select the descending order of nomenclature.

- 1) Kingdom - division - class - order - genus
- 2) Kingdom - class - order - phylum - species
- 3) Phylum - class - order - family - genus
- 4) Class - phylum - order - genus - family

❖❖❖ ALL THE BEST ❖❖❖