



S

I

M

S[®]

(SCHOLARS INTEGRAL MATHS & SCIENCE OLYMPIADS)



BIGGEST NATIONAL LEVEL OLYMPIADS (STAGE - II) : 2025-26

MAX. MARKS : 100

SISO QUESTION PAPER

TIME: 60 MIN.

NAME OF THE STUDENT	:
HALL TICKET NUMBER	:
NAME OF THE SCHOOL	:

INSTRUCTIONS:

- ✦ This question paper contains 25 questions.
 - ✦ All questions are single correct answer type.
 - ✦ Each question carries 4 marks.
 - ✦ No negative marks.
 - ✦ Check whether 25 questions printed or not.
 - ✦ Read the instructions carefully given on the OMR sheet.
 - ✦ Hand over OMR Sheet to the invigilator before leaving the exam hall.
 - ✦ Retain Question paper with you.
 - ✦ Results will be available at www.simsolympiad.org .
 - ✦ One copy of branch results will be sent to the concerned school mail id.
-

Single Correct Answer Type :

25 × 4 = 100

1. Match the internal organs shown in the figure with their respective names.



P



Q



R



S

- 1) P - Heart, Q - Lungs, R - kidney, S - Stomach
- 2) P - Lungs, Q - Kidney, R - Stomach, S - Heart
- 3) P - Heart, Q - Lungs, R - Stomach, S - Kidney
- 4) P - Heart, Q - Kidney, R - Lungs, S - Stomach

2. Match the following.

Column-I

- a) Ginger
- b) Radish
- c) Tomato
- d) Rice
- e) Spinach

Column-II

- p) Leaf
- q) Fruit
- r) Seed
- s) Root
- t) Stem

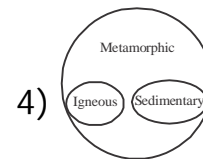
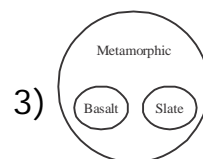
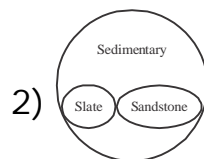
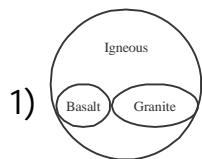
- 1) a-t, b-s, c-q, d-r, e-p
- 3) a-p, b-q, c-r, d-p, e-r

- 2) a-q, b-s, c-t, d-p, e-r
- 4) a-t, b-r, c-s, d-q, e-p

3. A football kicked by a boy rolls on the ground to some distance and stops. The force which stops the ball is

- 1) Muscular force
- 2) Gravitational force
- 3) Mechanical force
- 4) Frictional force

4. Study diagram and choose the correct option :



5. In the given figure the tubes which carry water and minerals are called _____.

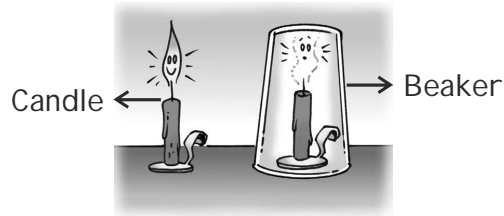
- 1) Margin
- 2) Veins
- 3) Tip
- 4) Petiole

6. Which of the following pairs are MIS-MATCHED?

- i) Frog - Caterpillar
- ii) Cockroach - Nymph
- iii) Whale - Mammal
- iv) Butterfly - Tadpole

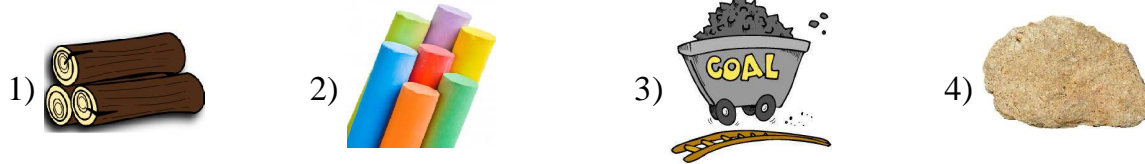
- 1) Both i & ii
- 2) Both iii & iv
- 3) Both ii & iii
- 4) Both i & iv

7. A student carried out an Experiment as shown in the figure given below.



- 1) Air moves things
- 2) Air is needed for burning
- 3) Air occupies space
- 4) Air has weight

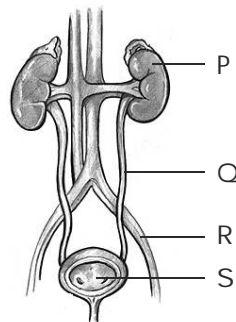
8. Which of these can be mined from earth and used as an energy source ?



9. Which of the following gas used in Respiration and Photosynthesis process?

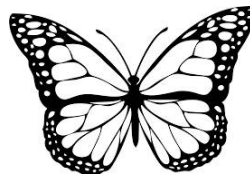
- 1) Nitrogen
- 2) Oxygen
- 3) Water
- 4) Carbondioxide

10. In the figure given below, urine is Stored in:



- 1) P
- 2) Q
- 3) R
- 4) S

11. Presence of eyelike patterns on the wings of butterflies is an.

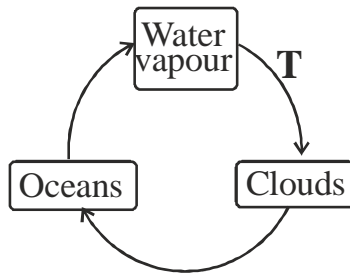


- 1) Adaptation to tree living
- 2) Adaptation to availability of food
- 3) Adaptation for self protection
- 4) Adaptation to change climate

12. The hottest planet is _____.

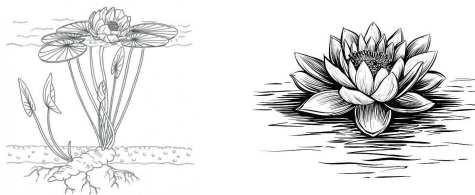
- 1) Jupiter
- 2) Earth
- 3) Mercury
- 4) Venus

13. The diagram given below shows a part of the water cycle. What is the process taking place at a arrow labelled 'T' ?



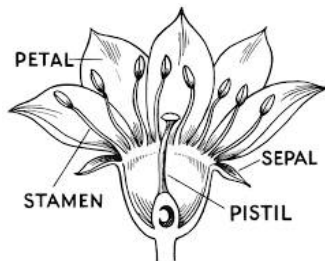
- 1) Melting 2) Condensation 3) Evaporation 4) Precipitation

14. The diagrams given below belongs to 'Aquatic plants'. They represent which group ?



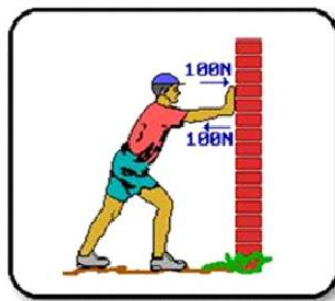
- 1) Fixed Water plants 2) Submerged plants
3) Floating plants 4) Desert plant

15. Which of the following parts of flower gives 'protection' and helps in 'pollination' ?



- i) Sepals ii) Petals iii) Stamens iv) Pistil
1) Both i & ii 2) Both iii & iv 3) Both ii & iv 4) Both i & iii

16. The activity given below shows



- 1) No work 2) Double work 3) Very less work 4) Very high work

17. Match the following and select the correct answer:

Column- I

- a) Clay
- b) Sand
- c) Loam
- d) Gravel

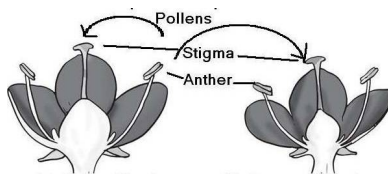
- 1) a-i, b-ii, c-iii, d-iv
- 3) a-ii, b-iii, c-iv, d-i

Column-II

- i) Does not hold water
- ii) Useful for making toys and pots
- iii) Mostly found in the deserts
- iv) Best for the growth of plants

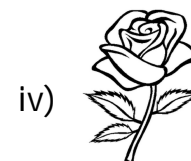
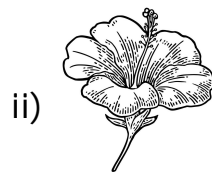
- 2) a-iv, b-iii, c-ii, d-i
- 4) a-iii, b-iv, c-i, d-ii

18. Which process is represented in the figure given below?



- 1) Self pollination only
- 2) Cross pollination only
- 3) Fertilization only
- 4) Both self and cross pollination

19. Identify the 'Incomplete flower' from the following.



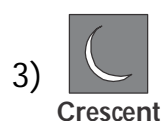
- 1) Both i & ii
- 2) ii Only
- 3) iii Only
- 4) Both ii & iv

20. A kazoo is a toy that makes a sound when a person hums into it. Sound comes out of the kazoo because it _____.

- 1) Can vibrate
- 2) Can float
- 3) Is plastic
- 4) Is shiny



21. On the same night, Suja and Vijay were looking at the moon from different parts of New Delhi. Suja correctly drew the shape of the moon as given below. Which of the following shapes would Vijay see ?

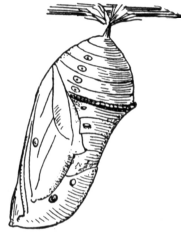


22. The object in the given figure is made of a combination of



- | | |
|---------------------|----------------------|
| 1) Plastic and wood | 2) Wood and metal |
| 3) Metal and cotton | 4) Plastic and metal |

23. The diagram below shows the pupa of a butterfly. Although the pupa always remains still and does not show any activity, it is a living thing. This is because of _____.



- | | |
|------------------------------------|---|
| 1) It can change in size | 2) It can change in length |
| 3) It can develop into a butterfly | 4) It can change the colour of its case |

24. A iron ring is heated, which of the following statement is correct?



- | | |
|----------------------------|-------------------------------|
| 1) The change is temporary | 2) The change can be reversed |
| 3) The change is physical | 4) All of these |

25. Which of the following is NOT true about the organism given below ?

- | | |
|----------------------|------------------------------------|
| 1) It lays eggs | 2) It takes care of its babies |
| 3) It lives in water | 4) It protects itself from enemies |

❖❖❖ ALL THE BEST ❖❖❖